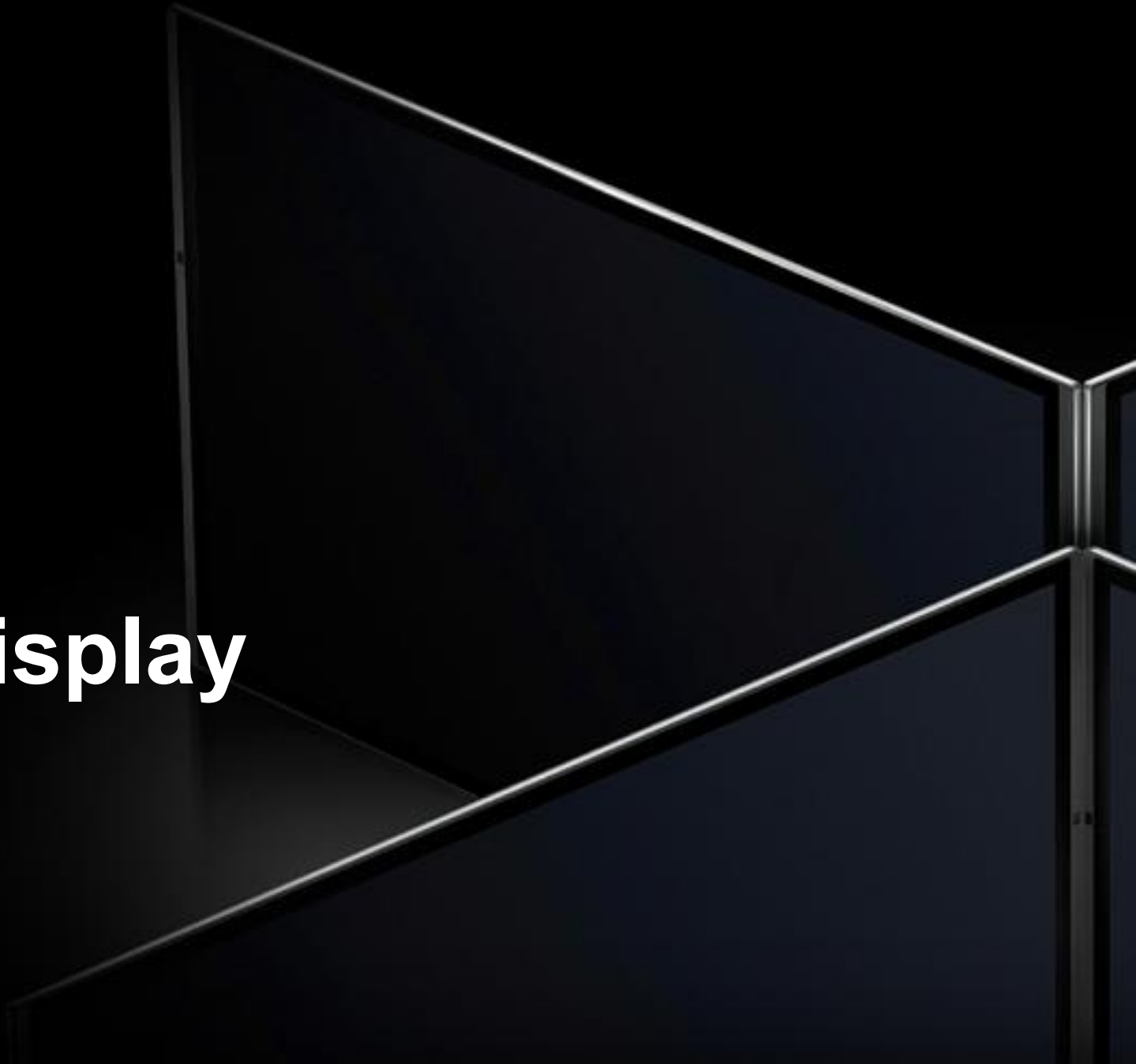


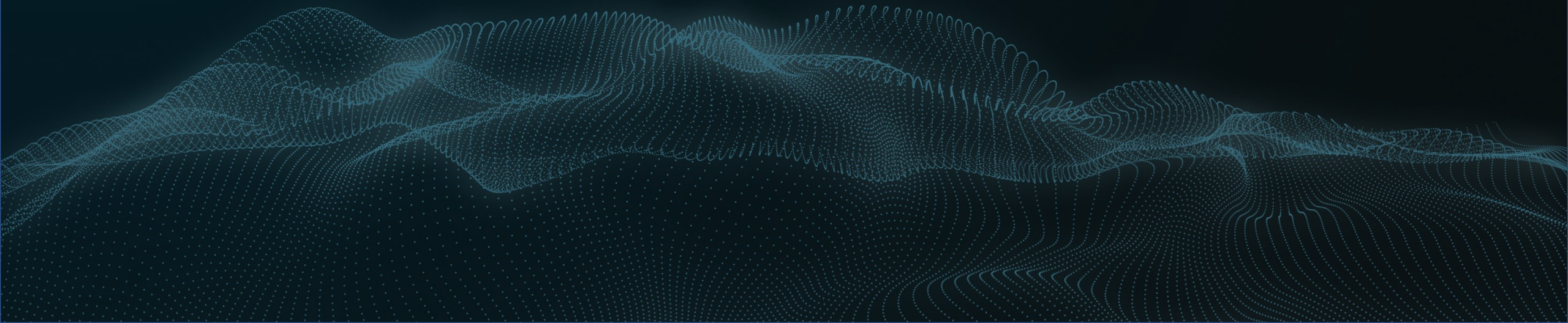
MAXHUB
Maximize Efficiency

MAXHUB

All-In-One LED Display



I . Product Design Concept
Bigger dream with bigger MAXHUB



1. All-in-one Product Design

Work as TV



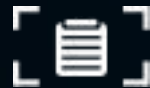
16:9 Display Ratio



Indicator Light



1920×1080 Resolution



Clear Menu



Plug-and-play Operation



Built-in Smart System



Remote Control



USB Reading



2. Standard Product Proportion

16: 9 ratio

1920*1080 standard resolution



110 "

138 "

165 "

220"

3. Various Installations



Foot-stand
light-weight structure · fast installation · free movement

110" 138" 165"



Wall-mounting
space saving · full front access · ultra-slim body

110" 138" 165" 220"

MAXHUB All-in-one LED Display Product Parameter

SPECIFICATION	LM110MP12	LM138MP15	LM165MP19	LM220MP25
Size	110"	138"	165"	220"
Pixel Pitch(mm)	1.2	1.5	1.9	2.5
Brightness(nit)	100~500		100~600	
Refresh Rate(Hz)	1920~3840			
Resolution	1920×1080			
Power Consumption(Max/Ave) (W/display)	1900/850	2500/1250	3060/1040	5120/1740
Display Area(mm)	2440×1373	3050×1716	3700×1900	6300×3000
Overall Dimension(mm)	2448×1500×38.5	3058×1843×38.5	3668×2186×38.5	4888×2872×38.5
Weight(kg)	119	190	265	465
IP Rating	IP40			
Gray Scale(Bit)	14			
Viewing Angle(H/V)	160°/160°			
Input voltage(V)	AC 100-240V			
Installation Method	Foot stand/Wall mounting/hanging			
Maintenance	Front			
Operating Temperature/Humidity(°C/RH)	-10~40/10%~85%			

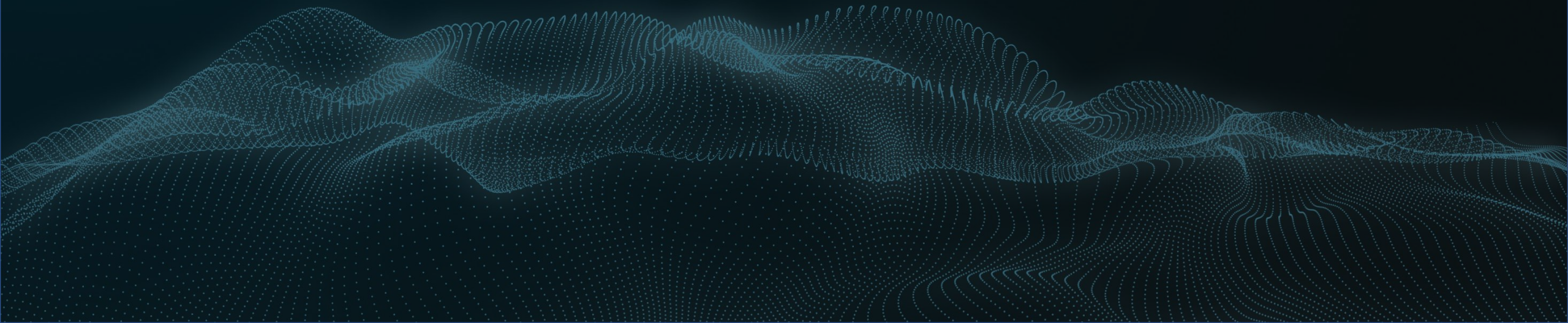
·All specification are subject to change without prior notice.

Panel Parameter					
SPECIFICATION	M2709	M2712	M2715	M2719	M2725
Pixel Pitch(mm)	0.9	1.2	1.58	1.9	2.5
LED Type	SMD				
Brightness(cd/m ²)	100~500			100~600	
Refresh Rate(Hz)	1920~3840				
Power Consumption(Max/Ave) (W/m ²)	812/287	746/263	574/191	406/143	382/134
Module Resolution(px)	160×180	120×270	96×108	80×90	60×135
Module Size(mm)	152.5×171.5625	152.5×343.125	152.5×171.5625	152.5×171.5625	152.5×343.125
Panel Resolution(px)	640×360	480×270	384×216	320×180	240×135
Panel Size(mm)	610×343.125×38.5				
Weight(kg/panel)	7				
IP Rating	IP40				
Gray Scale(Bit)	14				
Maintenance	Front				
Operating Temperature/Humidity(°C/RH)	-10~40/10~85%				
·All specification are subject to change without prior notice.					

Second Generation Product Parameter

Size(inch)	Pixel Pitch	Overall Dimension(mm)	Resolution	Ratio	Brightness(nits)
120	1.3	2670*1625	1920*1080	16:9	100-500
150	1.7	3336*2000	1920*1080	16:9	100-500
180	2.0	4002*2375	1920*1080	16:9	100-500

II. Product Features

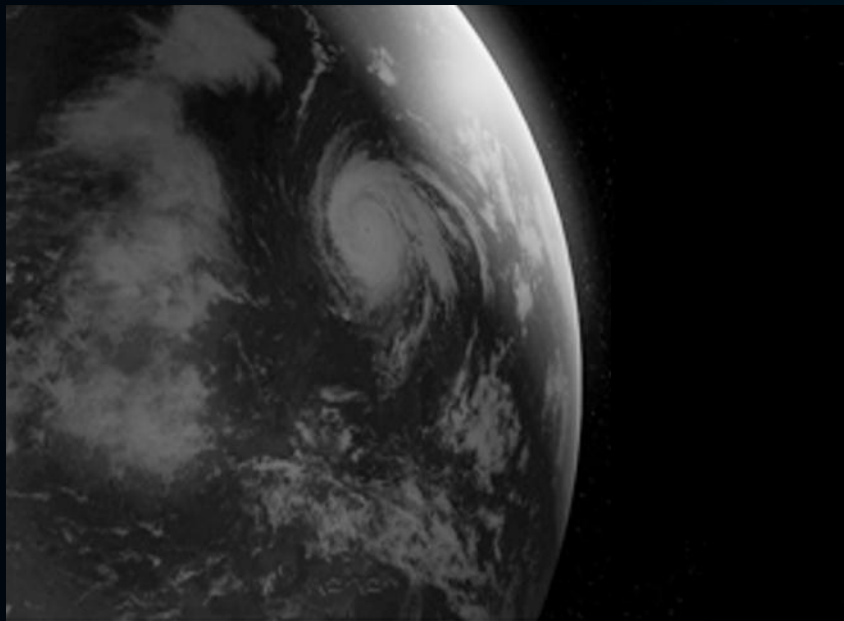


Concerns of Indoor Display Application

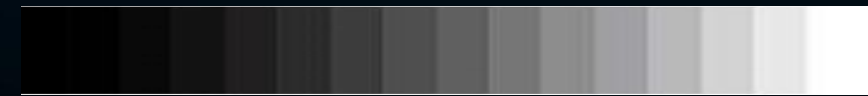
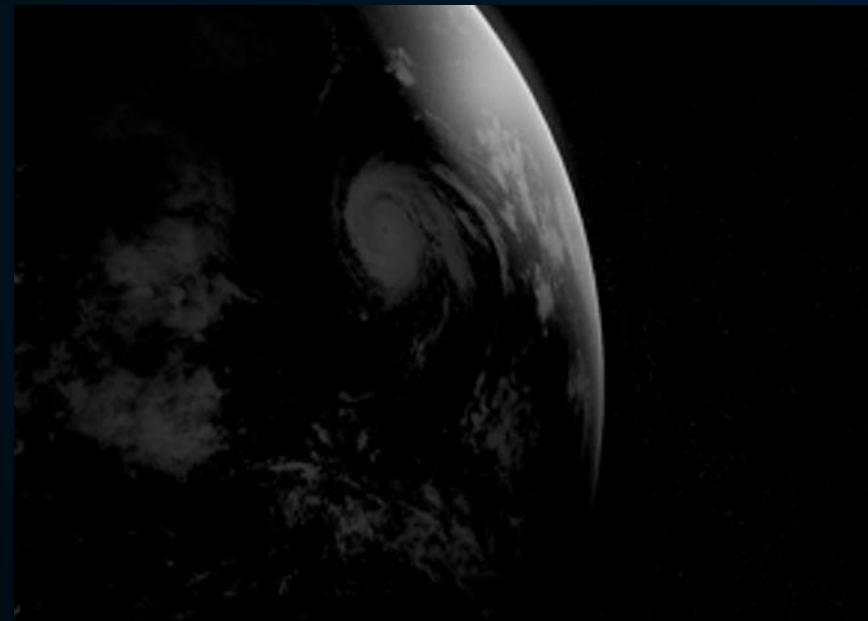
- Close-distance and long-time watching
- Space saving
- Fully noiseless
- Energy saving



1. High Gray Scale Level under Low Brightness



MAXHUB all-in-one LED Display



Traditional display

2. Pixel to Pixel Calibration on the Whole Screen



Before

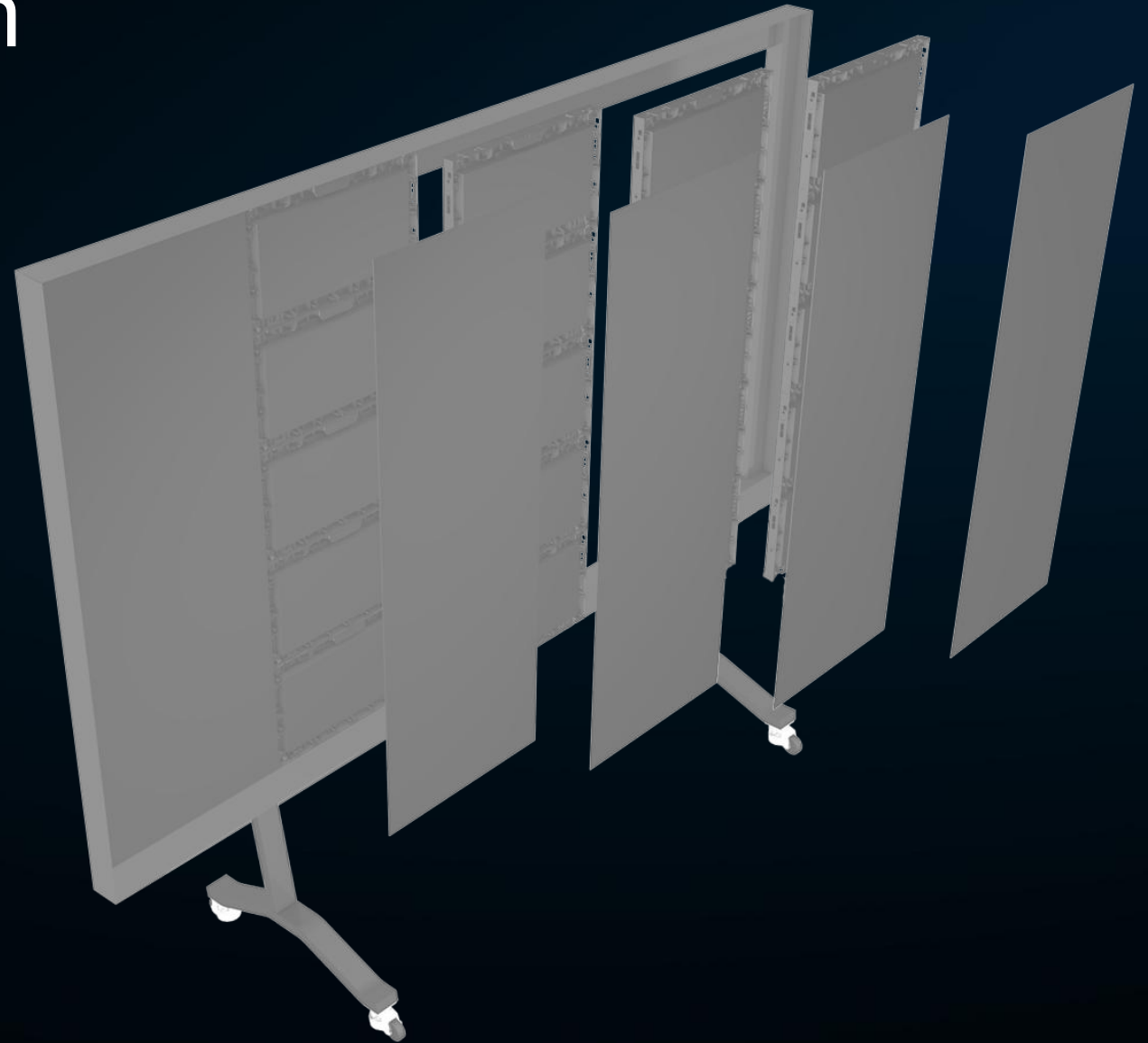


After

- Pixel to pixel calibration before delivery to eliminate bright/dark lines, and thus to ensure even brightness and shades, providing a comfortable close-distance watching experience.

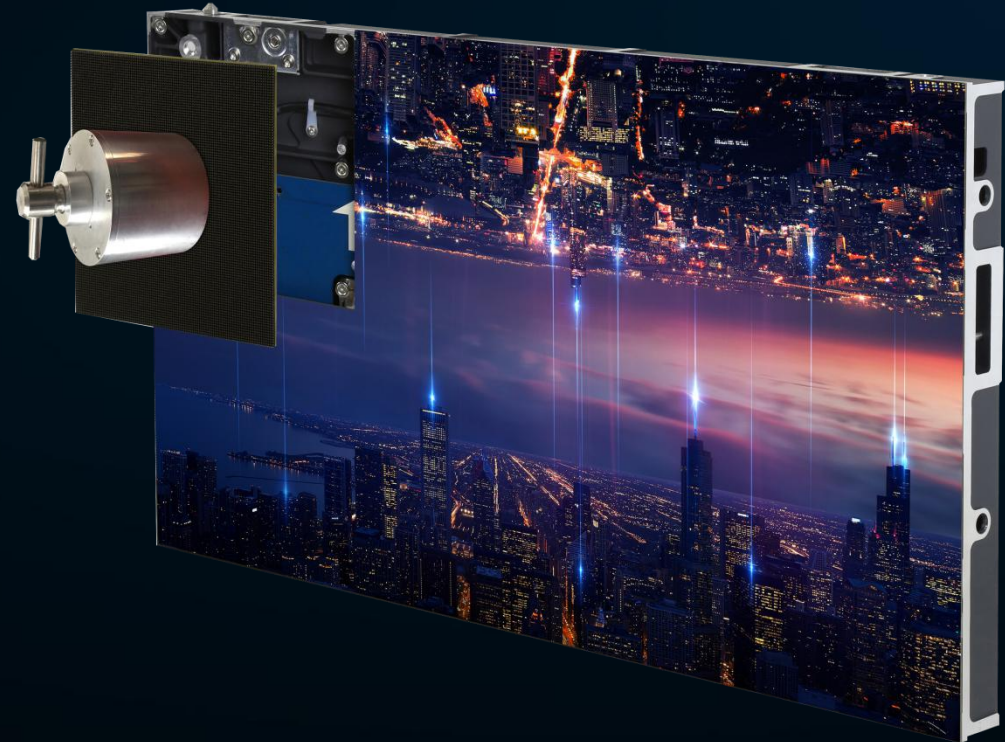
3. Light-weight Design

- Lightweight design with 6.8kg die cast aluminum cabinet; effective installation without complicated steel structure.
- Ultra-thin design, 38.5mm thickness

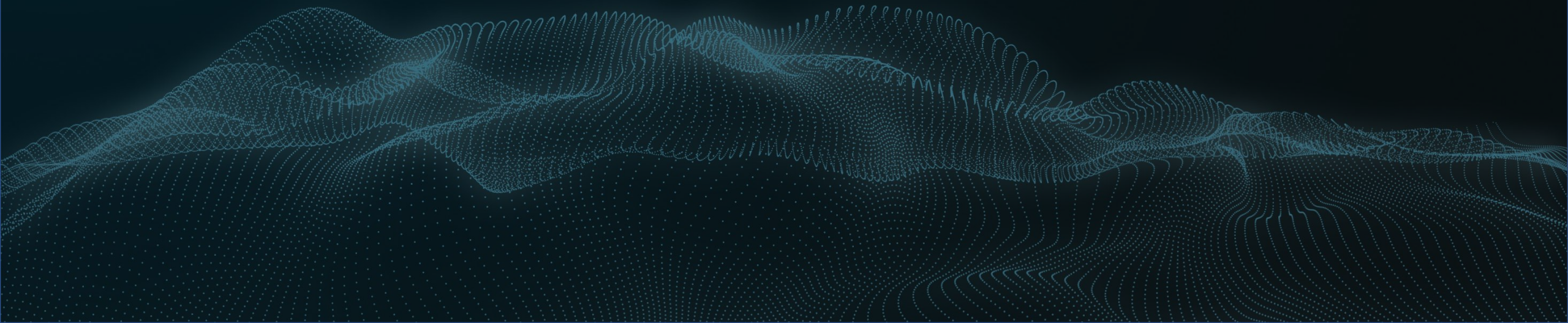


4. Space saving & Easy Installation

- Not need reserved access path, ensuring easy maintenance and space saving.
- Fully front access, hot plug available.



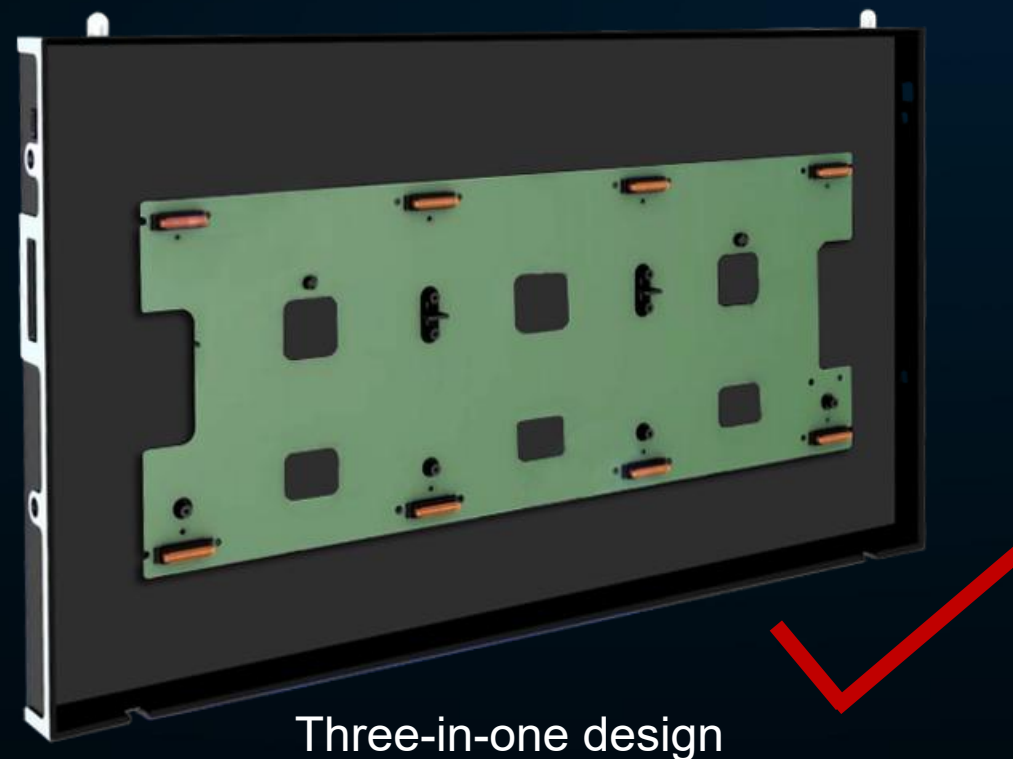
III. All in one Solution



1. Highly Integrated Components



VS

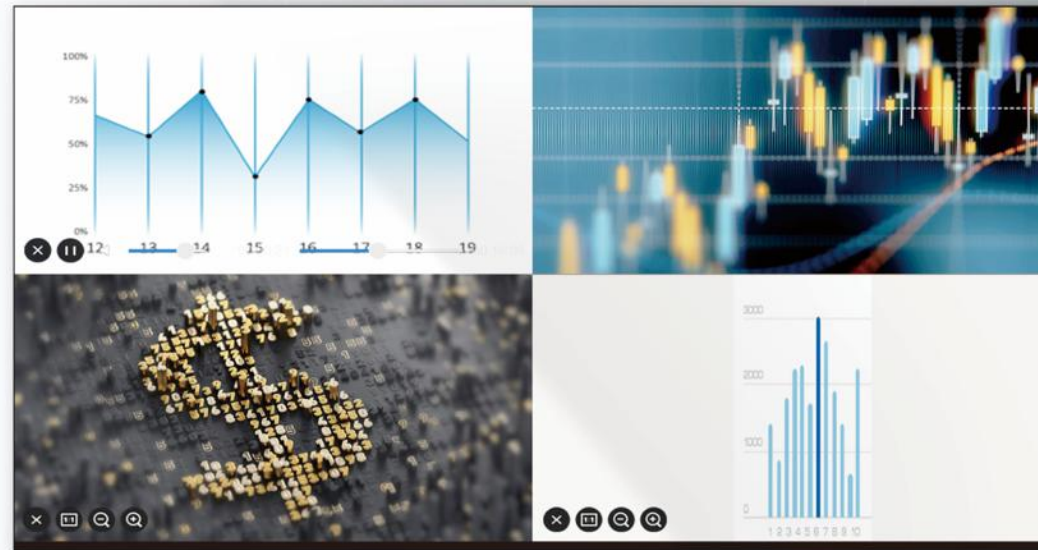


- The integrated design of HUB board, power supply and receiving card reduces wiring connection of components and failures caused by manual operation, therefore the stability can be greatly improved.

2. Built-in Innovative Mature Technology

Wireless Mirroring:

- Support computer, mobile phone and tablet wireless mirroring, multi-screen display and simultaneous display of 4 devices in maximum loading.



3. Remote Control with Easy Operation

Remote control can realize:

- Menu Selection
- Brightness Adjustment
- CCT Adjustment
- Color Saturation Adjustment
- Channel Switching
- One-button Standby
-





- Screen writing
- Page notes
- Meeting records sharing
- Remote video
- Multi screen display

.....

Connect small device to big display,
for more functions and for bigger places.

3

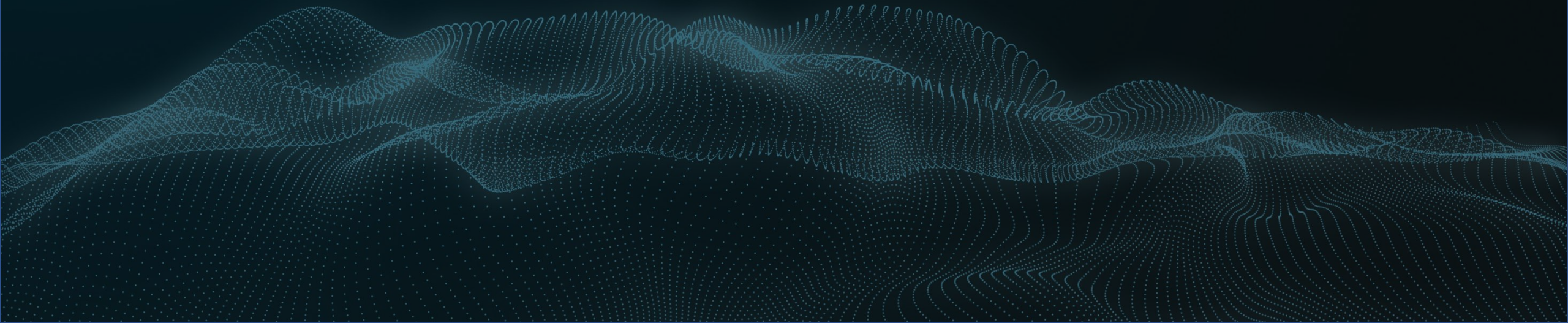


2

1

1. PC
2. Smart Podium
3. MAXHUB LED Wall

IV. Cases

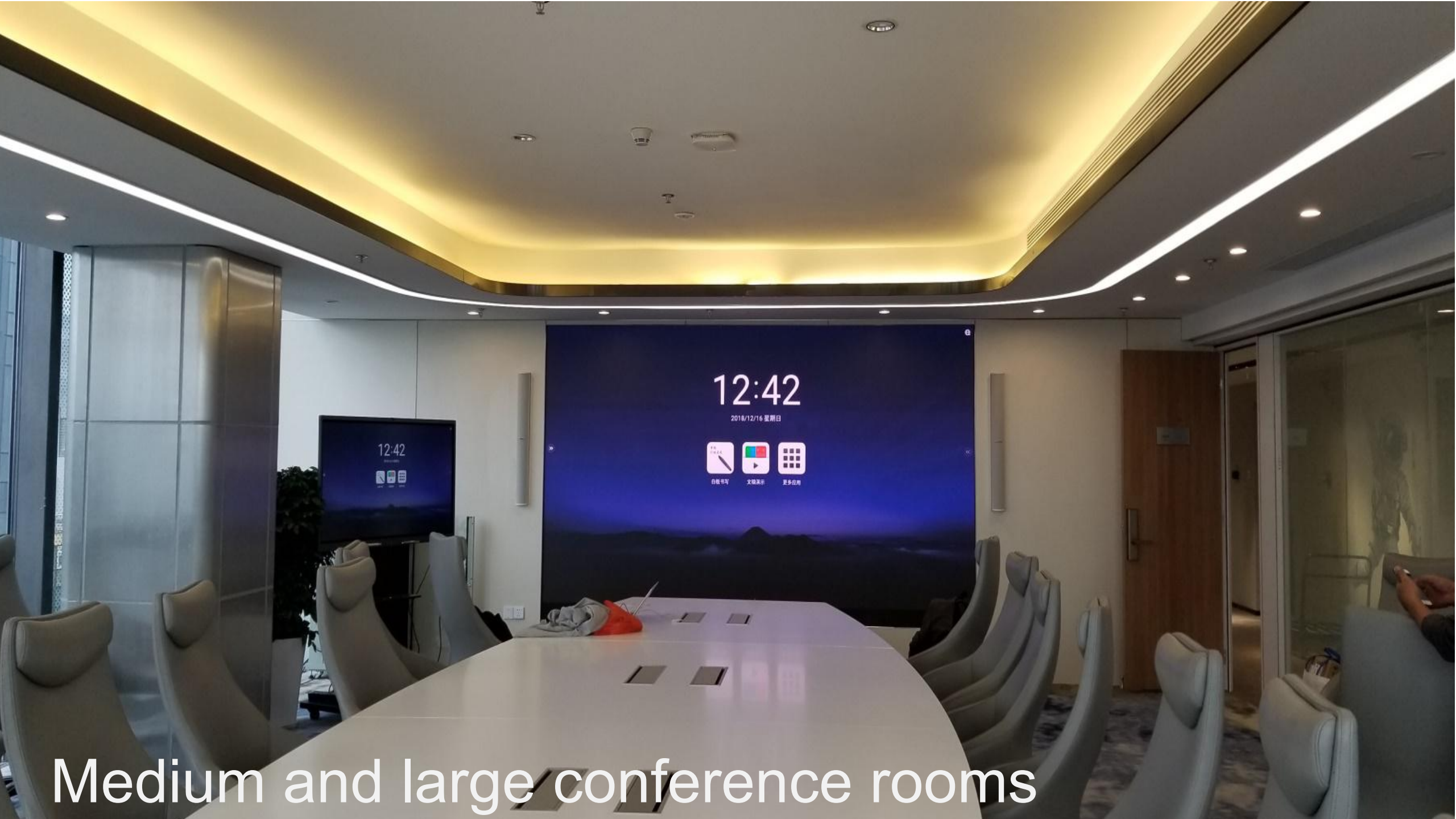


· Medium and large conference rooms/Lecture hall/Exhibition hall/Showroom





Medium and large conference rooms



Medium and large conference rooms



一体化LED显示终端
欢迎业务孵化BG各位兄弟姐妹回家

Lecture hall



Lecture hall



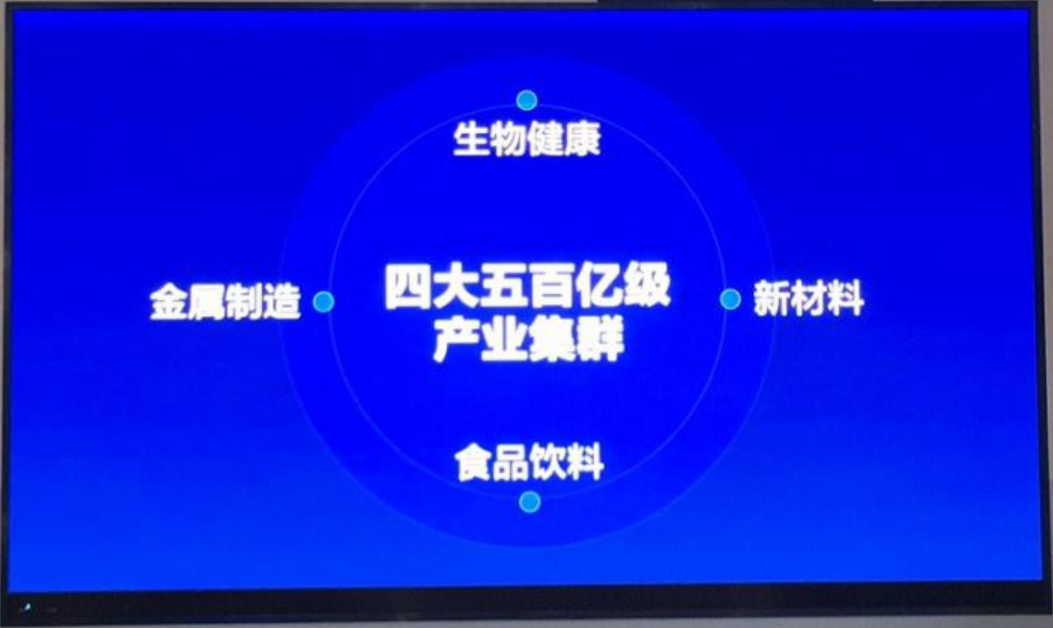
Lecture hall



Showroom



hall/showroom



Showroom

Thanks

